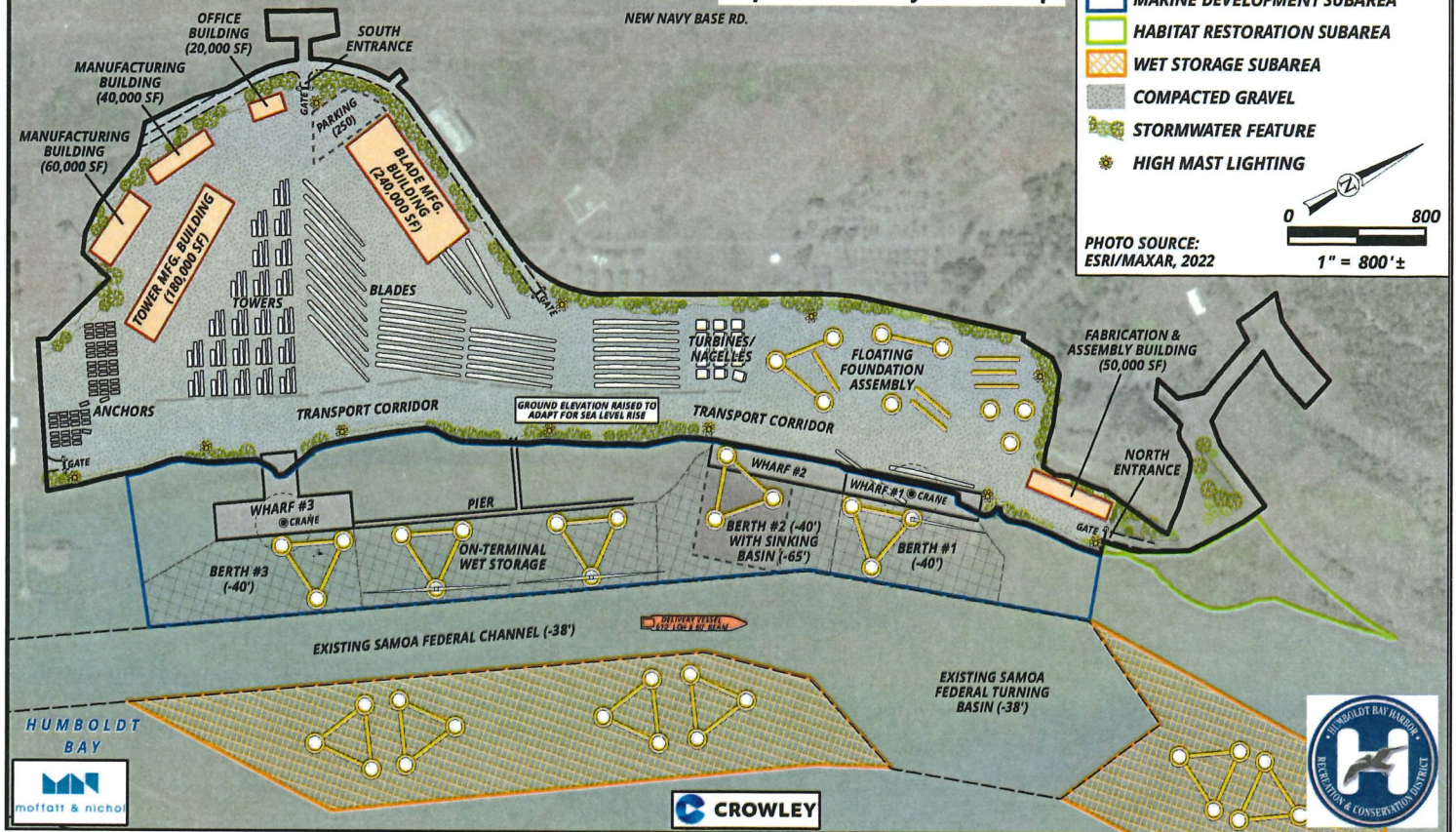


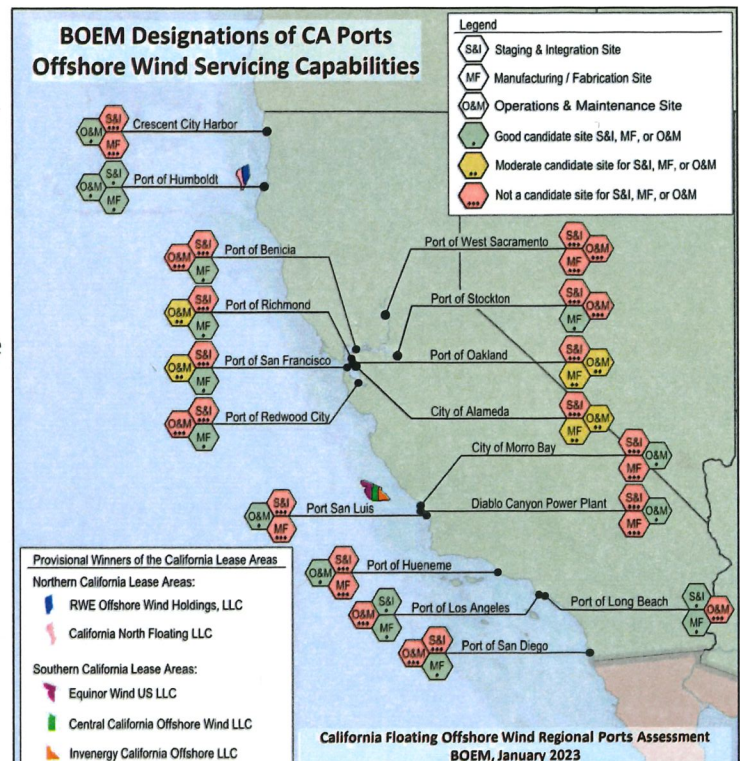
Humboldt Bay Offshore Wind Heavy Lift Marine Terminal

April 2023 Project Concept



California's West Coast Offshore Wind Port

- Humboldt Bay is the only port in California designated as a good candidate for Staging & Integration (S&I), Manufacturing/Fabrication (MF), and Operations & Maintenance (O&M) per "California Floating Offshore Wind Regional Ports Assessment" (BOEM, January 2023). See map to right.
- Humboldt Bay is centrally located to current/future West Coast BOEM offshore wind lease areas and is the closest port to best wind resources in California.
- Federal navigation channel is 38' deep & $\geq 450'$ wide, with no bridges or vertical draft restrictions.
- Humboldt Port Authority has prepared a project concept for a 180+ site. The California Energy Commission granted \$10.45M to District to advance the proposed project.
- CEQA NOP to be release in June 2023. Permitting is underway. Early-stage construction scheduled: 2026.
- An additional 300 to 600+ acres of available Coastal Dependent Industrial lands exist within Humboldt Bay with direct access to the navigation channel. These additional sites have the potential to serve offshore wind port development (i.e., S&I, MF and O&M).
- The project has broad community support!



Humboldt Bay Harbor, Recreation
and Conservation District

(707) 443-0801

<https://humboldt-bay.org/>

